

York Technical College

2021-22 Strategic Goals

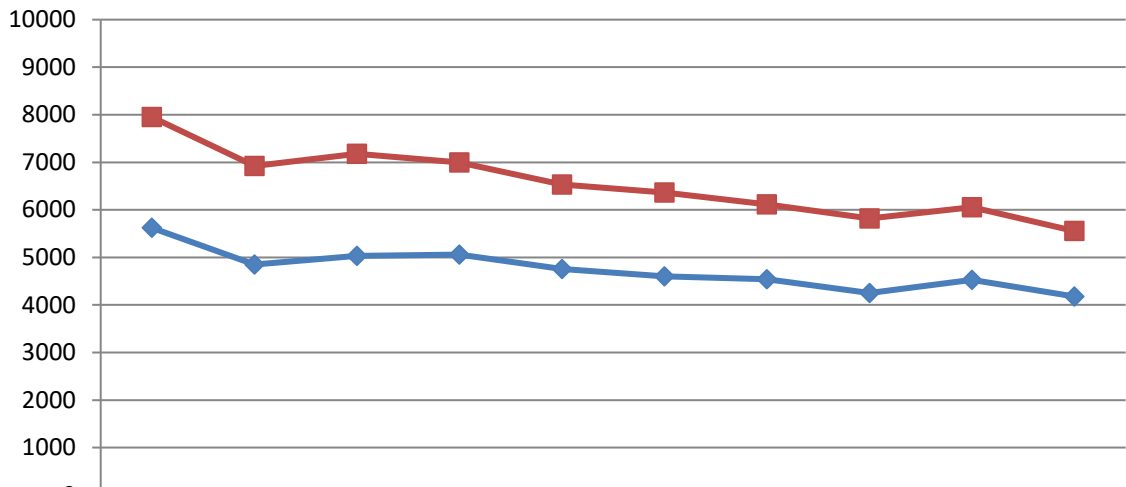
Enrollment – 0% (Break even by end of year)

Opening Fall to Opening Fall Success Rate – 70%

Completers – 2% Annual Increase

Graduate Placement Rate – 90%

York Technical College Annual and Fall Enrollment



| | 2011-12 | 2012-13 | 2013-14 | 2014-15 | 2015-16 | 2016-17 | 2017-18 | 2018-19 | 2019-20 | 2020-21 |
|----------|---------|---------|---------|---------|---------|---------|---------|---------|---------|---------|
| ◆ Fall | 5621 | 4849 | 5030 | 5061 | 4753 | 4604 | 4538 | 4253 | 4529 | 4178 |
| ■ Annual | 7950 | 6923 | 7182 | 6996 | 6531 | 6362 | 6117 | 5819 | 6053 | 5554 |

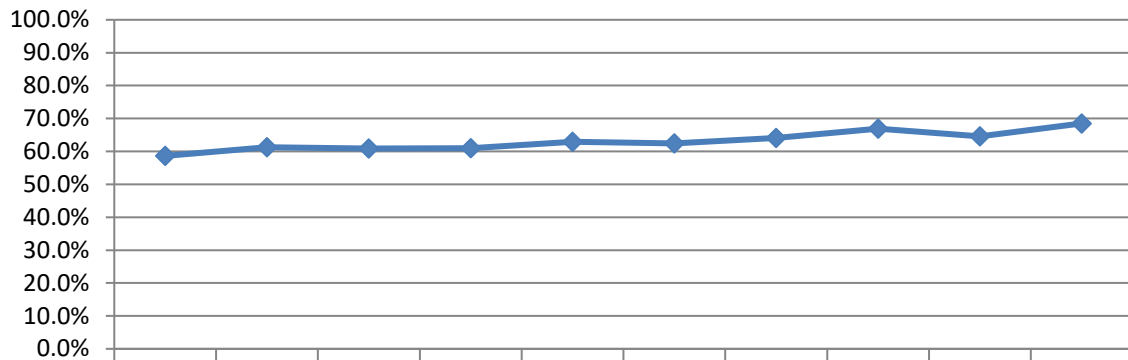
Source: York Technical College Office of Institutional Effectiveness & Research

Benchmark Group: N/A

Description: Fall enrollment includes all credit students enrolled at the opening fall census date; annual enrollment includes the unduplicated count of all credit students enrolled at the opening census dates for fall, spring, and summer semesters.

2021-22 Goal: 0% (Break even by end of year)

Opening Fall to Opening Fall Student Success Rates



| | 2011-12 | 2012-13 | 2013-14 | 2014-15 | 2015-16 | 2016-17 | 2017-18 | 2018-19 | 2019-20 | 2020-21 |
|---------|---------|---------|---------|---------|---------|---------|---------|---------|---------|---------|
| Success | 58.6% | 61.2% | 60.9% | 61.0% | 62.9% | 62.4% | 64.1% | 66.9% | 64.6% | 68.5% |

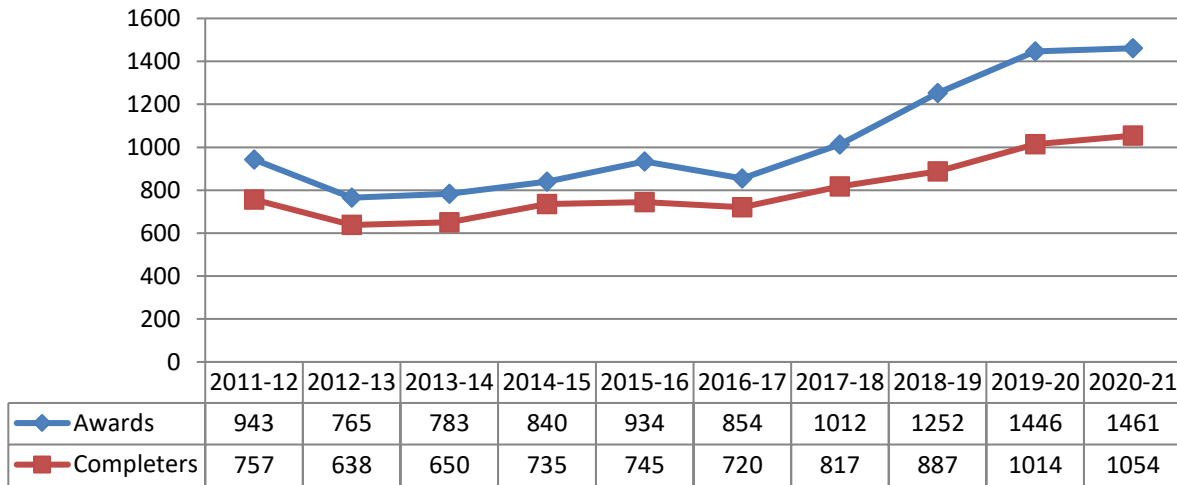
Source: York Technical College Office of Institutional Effectiveness & Research

Benchmark Group: N/A

Description: Opening Fall to Opening Fall Success Rates are calculated by dividing the total number of credit students who either graduated before fall semester, returned in fall semester, or transferred to another institution before fall semester, by the total number of students enrolled at the opening census date of the previous fall semester.

2021-22 Goal: 70%

York Technical College Awards and Completers (July 1 - June 30)



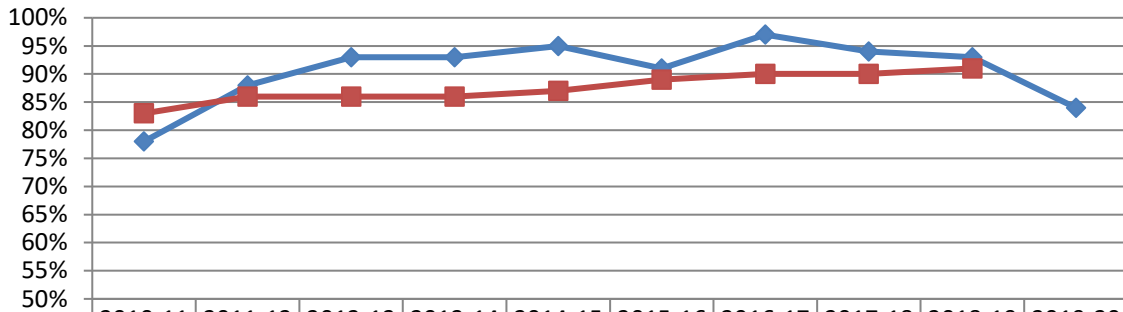
Source: York Technical College Office of Institutional Effectiveness & Research

Benchmark Group: N/A

Description: Completers are the number of students who earn at least one credential (degree, diploma, or certificate) between July 1 and June 30 of a given academic year. Awards are the total number of credentials earned by the completers.

2021-22 Goal: 2% Annual Increase

York Technical College Graduate Placement Rates



| | 2010-11 | 2011-12 | 2012-13 | 2013-14 | 2014-15 | 2015-16 | 2016-17 | 2017-18 | 2018-19 | 2019-20 |
|---------|---------|---------|---------|---------|---------|---------|---------|---------|---------|---------|
| ◆ YTC | 78% | 88% | 93% | 93% | 95% | 91% | 97% | 94% | 93% | 84% |
| ■ SCTCS | 83% | 86% | 86% | 86% | 87% | 89% | 90% | 90% | 91% | |

Source: South Carolina Technical College System Office

Benchmark Group: All 16 South Carolina Technical Colleges

Description: Graduate placement rates are determined by dividing the number of graduates during a given academic year who have reported that they are employed in their field or are continuing their education by the total number of graduates. This is the definition that all South Carolina Technical Colleges use for the Annual Program Evaluation Report and are included as a state-level accountability measure.

2021-22 Goal: 90%